

## UPCOMING EVENT

**Parents' Weekend**  
**Nov. 10, 2012**  
GT vs. UNC Football Game

## IN MEMORY

NC Beta has recently learned of the deaths of the following brothers...

**James Pritchett Jr. '44**  
**William Robbins II '70**

## CHAPTER OFFICERS

*President*  
**Pierce Lee**

*Vice President*  
**Nick Perks**

*Treasurer*  
**Lee Goehring**

*Philanthropy Chairman*  
**Wilson Orr**

*Social Chairmen*  
**Luke Thomas**  
**Luke Garrison**  
**HK Hallett**  
**Porter Johnson**

*Rush Chairmen*  
**James Waugh**  
**John Donelly**  
**Joey Brandes**  
**Sam Poole**

*Alumni Chairman*  
**Robert Sewell**

## Old Photos Requested!

Please send us your old photos. We will copy and return them to you! We are using them to dress up the walls of the house, and capture our history!

A PUBLICATION OF PHI DELTA THETA FRATERNITY

# NORTH CAROLINA BETA DATA

UNIVERSITY OF NORTH CAROLINA

CHAPEL HILL, N.C.

APRIL 2012

## ALUMNI REPORT

### Expansion!

#### *A Sneak Peek Inside the Renovation Project*

*By Steven Bell '67, NC Beta Board Member and Finance Chairman*

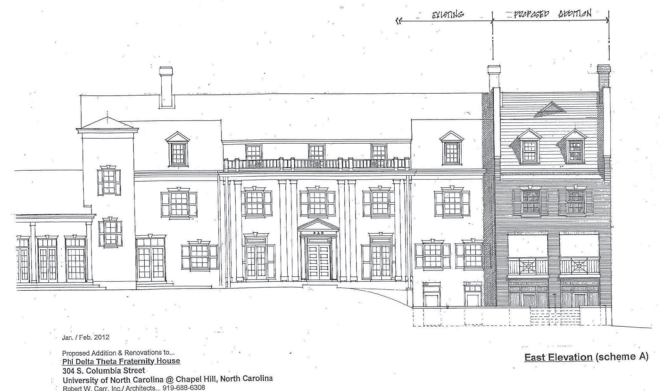
[Committee - **Steve Bell**, **Bob Page** and **Tom Kerns**]

The NC Beta Foundation Board approved plans on Feb. 28, 2012, drawn by Edgar Tom Carr, an architect. With some minor revisions to the first and second floors, the expansion will include the living room, adding six new bedrooms, bathrooms and an elevator. The new proposed wing will be on the north side of the house, next to the Chi Phi house. Included in these plans are a complete renovation of the kitchen with a walk-in refrigerator and freezer and an expanded dining room.

We have some hurdles to overcome, such as approval from Chi Phi, the Historic District and the Town of Chapel Hill Council, which will be difficult to ascertain.

The plans are generous indeed but we feel that the added revenue from the rooms will be enough to pay for about half of the cost

of construction. We had a meeting with the Chapter and they endorsed the plans, saying



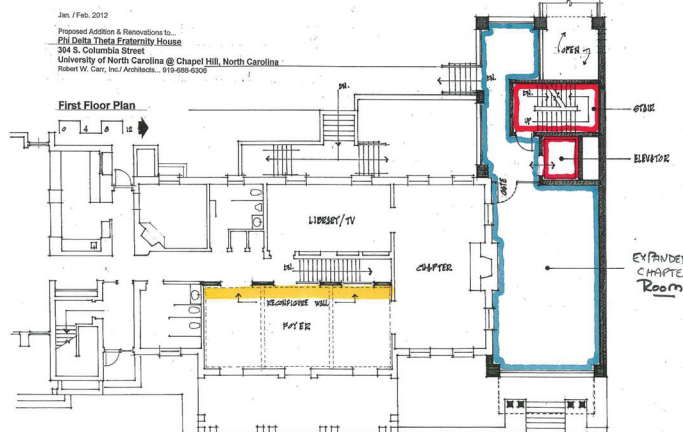
**Plans for the east elevation of the Phi Delta Theta house renovation.**

the upperclassmen would rent the new rooms because of their prime location.

We also envision adding some additional parking by eliminating some of the landscape buffers on the south side of the parking lot.

As of today, we do not know when we can start construction, but in order to not lose revenue from the Chapter (if we are approved) we could start in December 2013 and be finished by August 2014, to minimize income loss.

We plan to start talking with a fundraising group recommended by National and hope that all alumni with help with this project, including the new dining room, new bedrooms, study halls and the expanded living



**Plans for the first floor of the Phi Delta Theta house renovation.**

*(Continued on Page 2)*

## FUNDRAISING UPDATE

### More than \$11,000 Raised for Undergraduate Scholarships

By George E. Holt Jr. '58, Chairman of Fundraising for Beta Chapter of PDT, Inc.

More than \$11,000 was collected this year for the Beta Chapter of PDT, Inc., our tax-deductible organization.

The first scholarship recipient was sophomore **Macon Cornick**, who co-chaired the ALS Fundraiser at the Chapter House last April. Macon is the daughter of former NC Beta President **John Cornick '83**, who died of ALS in May at the age of 52. The other recipient was **Lucas Fries**, vice president of

the chapter, who went beyond the call in his leadership position.

**Ryan Watts** and Macon Cornick co-chaired the event at the house last year, which raised over \$20,000 for the ALS charity.

Please continue to support this organization. A second ALS fundraiser was held on March 24. Stay tuned to our next monthly eLetter for an update.

#### What is ALS?

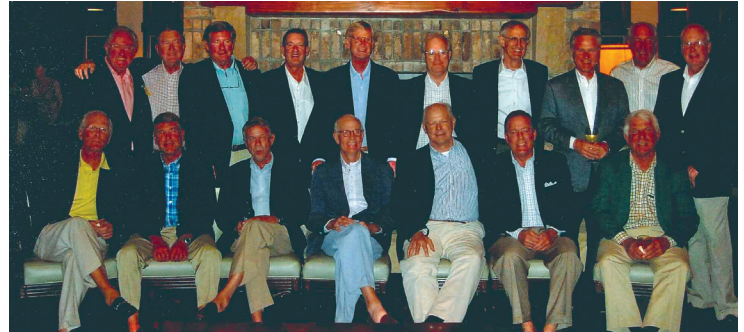
Amyotrophic lateral sclerosis (ALS), often referred to as "Lou Gehrig's Disease," is a progressive neurodegenerative disease that affects nerve cells in the brain and the spinal cord, ultimately leading to paralysis and death. Learn much more at [www.alsa.org](http://www.alsa.org).

## CLASS OF '68 PHI DELT REUNION

### Bonds of Brotherhood Still Strong 46 Years After Graduation

The class of 1968 held a reunion at Figure Eight Island and Wrightsville Beach, NC the weekend of September 29, 2011. Seventeen brothers and their wives had a great time playing golf, catching up and reflecting on some of their experiences as brothers and pledges.

*Pictured is the annual meeting of the 1968 UNC Phi Delt class in September 2010 at Figure Eight Island and Wrightsville Beach, NC*

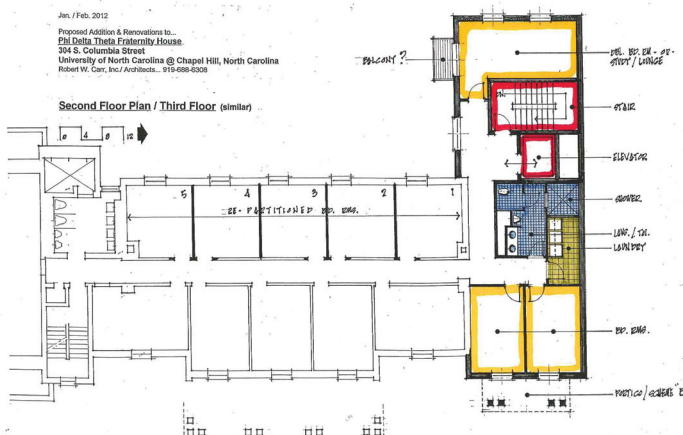


## ALUMNI REPORT

### Expansion... Continued from Page 1

rooms. We hope that a good percentage of the new donations will be tax deductible to you, as we will use our 501(c)(3) Corp. Beta Chapter of PDT, Inc. as the vehicle for these funds.

Larger versions of all the plans can be found on the web site at [www.uncphidelt.com](http://www.uncphidelt.com).



## ACTIVE CHAPTER

### Phi Delta Theta Active Brothers at the House in 2011



*From left to right: Michael Carbone, Chase Carbone, Bryson Mooring, Gage Mooring, David Paschal, Paul Paschal, Bryan Stockton and Drew Stockton. Read more about the active chapter's success on page 4.*

## ALUMNI UPDATES

### '40s

#### **Beverly Landstreet III '43**

(4424 Sheppard Place, Nashville, TN; bevwl@aol.com) I have too many memories to write about in this short space. **John Warner White**

#### **What's New with You?**

Submit your update for publication in the next *NC Beta Data*!

#### **Ideas include:**

- News of weddings, babies, career changes, new homes, etc.
- The funniest or fondest memories from your PDT days.
- Stories of recent reunions with other brothers.
- The best photos from your college years.

To make your submissions, email [content@affinityconnection.com](mailto:content@affinityconnection.com) (mention PDT at UNC), log on to [www.uncphidelt.com](http://www.uncphidelt.com), or mail them to the return address on this newsletter (include "#776 PDT UNC" in your correspondence).

'42 died last month. Not many of the WWII early '40s left. I would like to know who is still alive from the '42 and '43 classes.

### '50s

#### **Sherwood H. Smith Jr. '56**

(408 Drummond Dr., Raleigh, NC 27609-7006; johnnie.williams@pgnmail.com) The best memories from my fraternity days are life in the house, including close friendships; the house mothers, Mrs. Tanner day-to-day and Mrs. Neal; intramurals; dating; coats and ties at dinner; a true home away from home. On September 30, Progress Energy Corporation dedicated the largest electric plant on the system – fueled by natural gas – and named it the Sherwood H. Smith Jr. Electric Complex. It is in Richmond County near Hamlet, NC. With my wife, Eve, and I in attendance were other members of our family including my brother-in-law **C.C. "Bud" Hargrove**, NC Beta, 1956.

#### **Robert Collier Jr., JD '59**

(315 Earlwood Road, Statesville, NC; judgebcollier@bellsouth.net) The best memories from my fraternity days are my friendships.

### '70s

#### **Howell K. Hallett '76**

(1730 Brandon Road, Charlotte, NC 28207-2104; hk@kingfishercapital.com) My son **HK Hallett III** is a sophomore at Phi Delta Theta.

### '90s

#### **William Borden Hooks III '99**

(1616 Reynolda Road, Winston Salem, NC 27104-1020; borden.hooks@seahcc.net) I recently took a position as a professor of surgery at UNC Chapel SEAAEC division in Wilmington.

### '00s

#### **Brian Stockton '10**

(2950 Bakers Farm Road, Atlanta, GA 30339-4801) I am working in New York at UBS. I live with **Clay McFarlene** and **Gage Mooring**.

#### **John Powell '10**

(1573 York Place, Burlington, NC; jbp@duke.edu) My best memory is of the football pre-season brunches. Now I am at Duke Fugate School.

## ALUMNI Q&A

### Proud of the Character of the Members

*Thank you to **Ray Farris '62** for participating in this Q&A.*

#### **Why did you join Phi Delt as an undergraduate?**

I liked the members, particularly their good blend of enjoying themselves and doing well academically.

#### **What is the funniest memory from your Phi Delt days?**

Tom Wingfield '61 reading minutes at the chapter meetings. He ended up being a doctor when he should have been a humorist.

#### **What is the single fondest memory you have shared/will share with your children and grandchildren?**

The Christmas party where creative gifts were given to our dates.

#### **Have you visited Chapel Hill since graduation?**

Yes, for class reunions. This year

we have our 50th reunion and we will gather the '62 Phi Delt.

#### **What makes you the most proud about being a Phi Delt?**

I am proud of the character of the members.

#### **Do you have any spring break or road trip stories with your brothers?**

We went to a beach for spring break three times and took a road trip to California once.

#### **Share a story of a recent reunion or plans for an upcoming one with your Phi Delt brothers.**

We are currently working on our 50th Reunion and **Bob Bilbro '62** is heading up the effort to convene the Phi Delt at a specific gathering.

#### **What was your favorite part about spring semester?**

Beach weekend.

**What was your fraternity nickname and how did you get it? Are you still called that today?** Some people called me Rip or Ripper.

#### **Where has life taken you since graduation?**

**What is new in your life today?** I am happily married to Cydne Wright, class of 1965, and we have two children and six grandchildren. All of whom love Carolina, or when they are older, will love Carolina. I practice law and have remained interested in university affairs.

#### **Why would you encourage other brothers to engage with Phi Delt in their alumni years?**

The synergy of brothers visiting with one another whenever and wherever is always a good feeling.

**Connect with Ray at [rfarris@jahlaw.com](mailto:rfarris@jahlaw.com).**



## CHAPTER REPORT

### Beta Chapter is the Largest It's Been In History!

#### Phi Delt Brothers Make Strides in Everything They Do, From Academics to Philanthropy

By Pierce Lee, President of the North Carolina Beta chapter of Phi Delta Theta

I am happy to report that Beta Chapter has seen historical success this past year. In the fall, we initiated 22 new members, and two new affiliates. This is the largest our chapter has been in its entire history.

Phi Delt excelled academically in the last year. In the spring of 2011 our chapter finished fifth in the IFC in semester GPA, and this past fall we held a cumulative semester GPA of 3.25. Currently, we have a total of eight Morehead-Cain scholars, five Robertson Scholars and a Carolina Scholar.

The active members continue to be involved on campus in many ways. Our members are:

- Teaching assistants
- Founders of new student organizations
- Active on varsity, club and intramural sports teams
- Part of the Honor Council

- Involved in student government

**Lee Goering**, a Carolina Scholar, is this year's the President of the Carolina Challenge. The Challenge is UNC's student-led venture capital competition run out of the Kenan-Flagler Business School that rewards the winning team with \$50,000 to help make their business idea a reality.

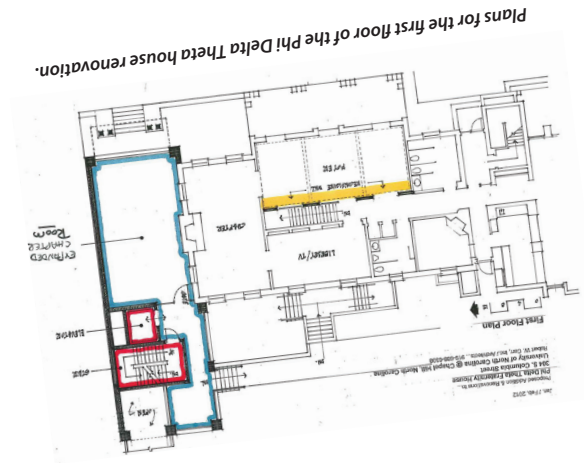
This year four brothers were chosen to participate in the Kenan-Flagler Private Equity Fund, a student-run fund with more than \$4.4 million of committed capital under management. Only seven undergraduates from all disciplines were selected to participate in the fund.

In the fall, over 90 percent of our members from all classes were involved with other student groups on campus. Our chapter performed an average of just over 30 hours of community service per person for the fall semester.

On November 19, Phi Delt teamed up with Pi Beta Phi sorority to host the Forth Annual Eve Carson Memorial 5K for Education. The 5K for Education was conceived as an event to celebrate the outstanding leadership and community service Eve Carson exhibited during her time at UNC-Chapel Hill.

This year, members of the UNC campus community celebrated what would have been Eve's 26<sup>th</sup> birthday by raising money for a cause she was passionate about.

Under the direction of philanthropy chair, **Alex Urquhart**, and with the help of the rest of the Phi Delt, the 2011 race was a success. The race raised \$40,905.07 in total donations the largest ever raised by a 5K in the University's history. Over 1,200 runners participated in the 5K. The race had 100 percent membership participation.



#### A Sneak Peek Inside Our House Expansion!

776-077 FN

Address Service Requested

Albert Lea, MN 56007-8007

Alumni Relations Processing Center  
P.O. Box 7007

**North Carolina Beta Foundation, Inc.**  
**PHI DELTA THETA FRATERNITY**



RESORTED  
FIRST CLASS MAIL  
U.S. POSTAGE  
PAID  
State College, Pa.  
Permit No. 2